

1

2

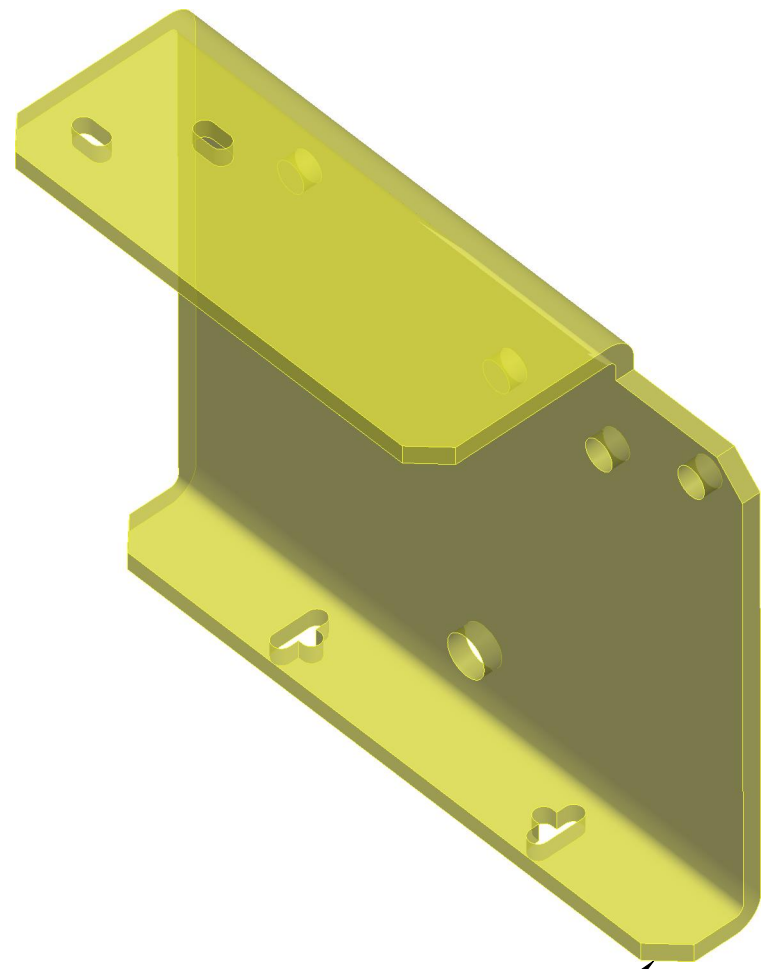
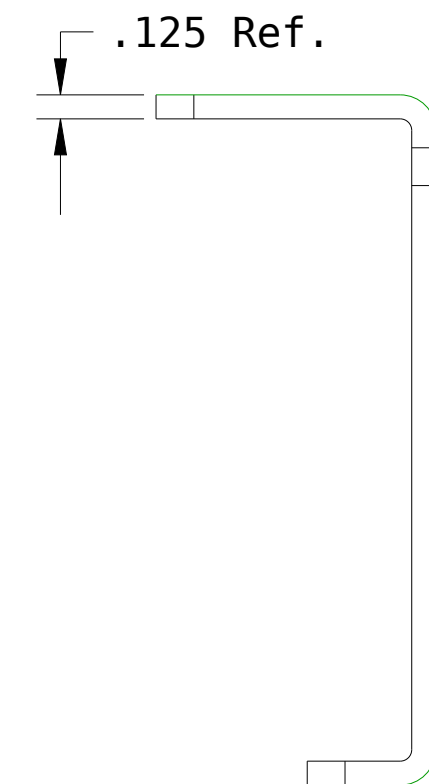
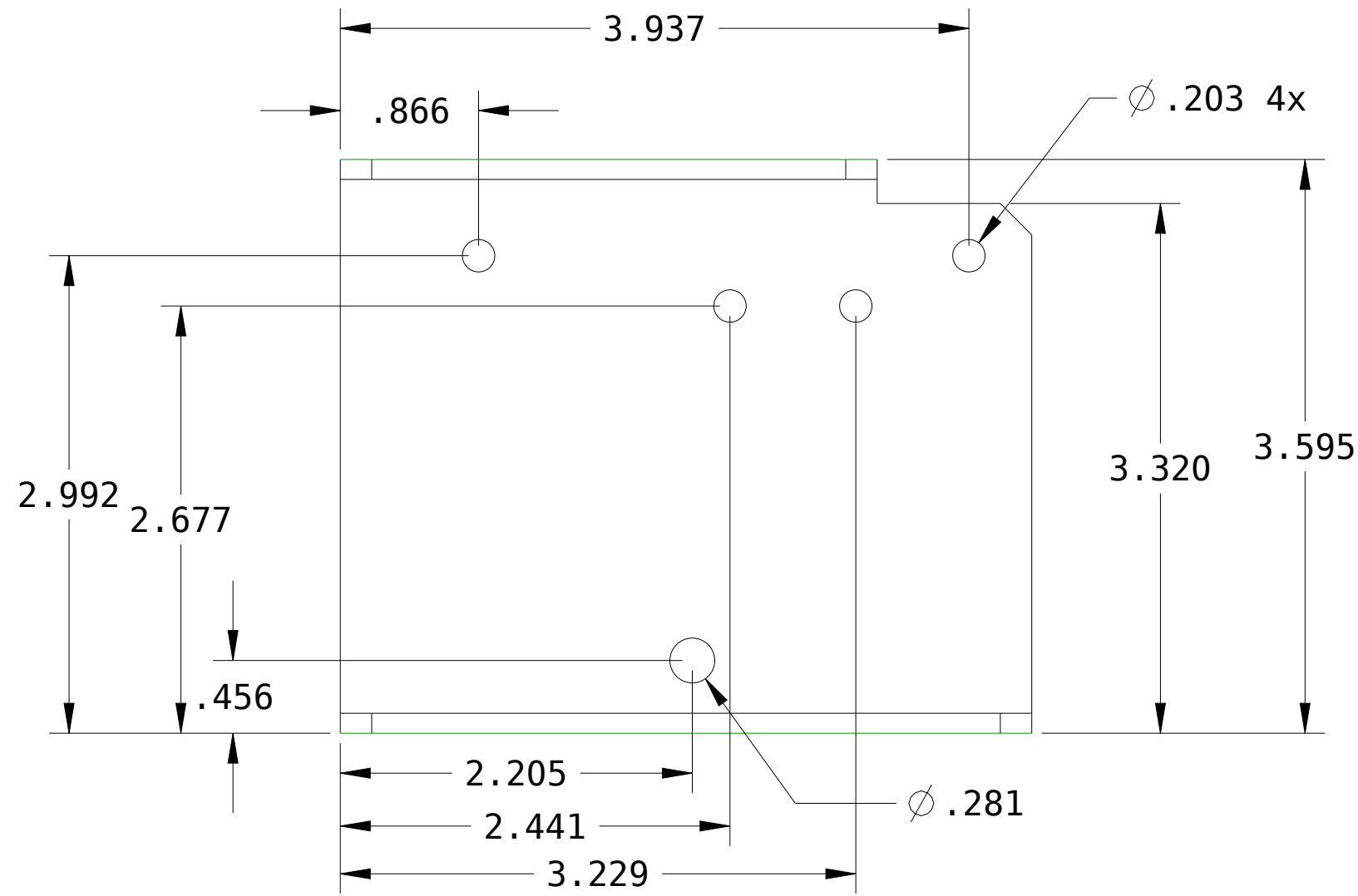
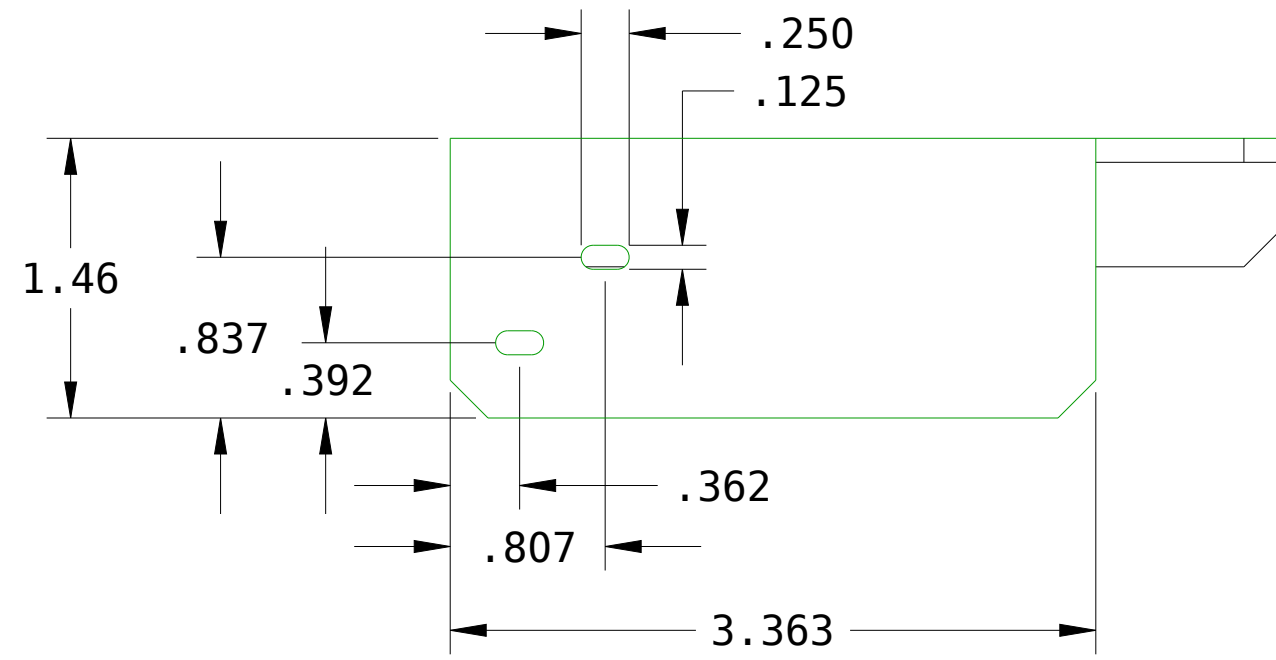
3

4

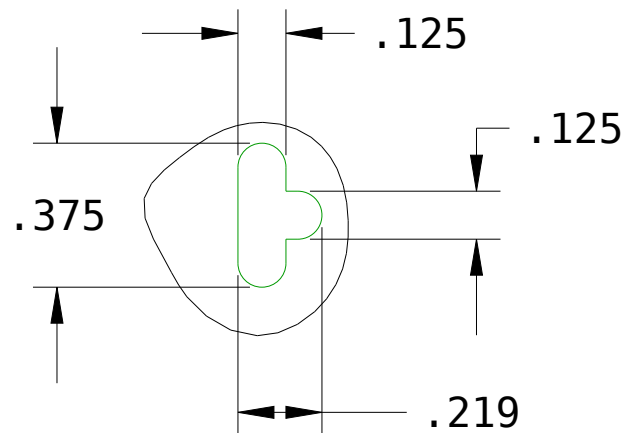
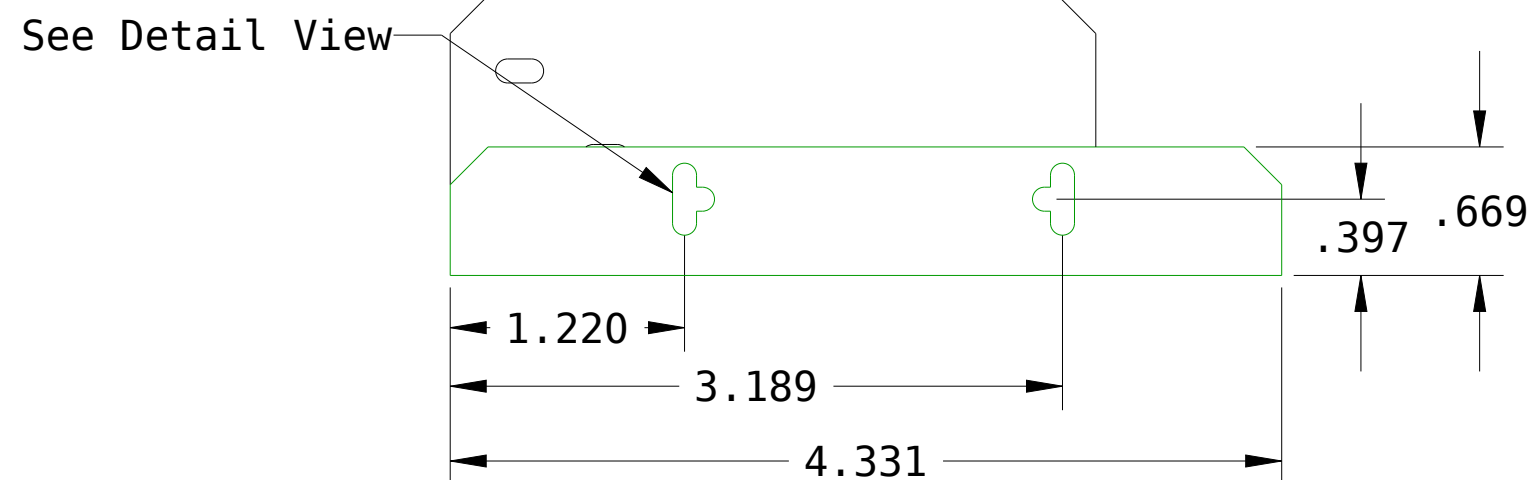
5

6

REVISIONS			
SYM	DESCRIPTION	BY	DATE
1	ORIGINAL	BJD	12/16/10
2	Updated Design	BJD	1/13/11
3	Added missing dims	BJD	1/25/11



Break all outside corners 0.18 x 45°



Notes:

1. Material: .125 Thick 5052 Aluminum.
2. Inside Bend radii to be sharp to .06 rad. max. Outer edges shall not show signs of fracture or crazing.
3. Matial grain direction at suppliers descretion.
4. Finish: Clear Iridite (RoHS Compliant)

DRAWN	BJD	12/1/16
CHECKER		
MECH. ENGR.		
ELEC. ENGR.		
PROJ. ENGR.		
CHIEF ENGR.		



The work is licensed under a Creative Commons Attribution-Share Alike 3.0 License

Y Bearing Plate



www.buildlog.net

C30001-013

SCALE

SHEET 1 OF 1

SCALE 2.000